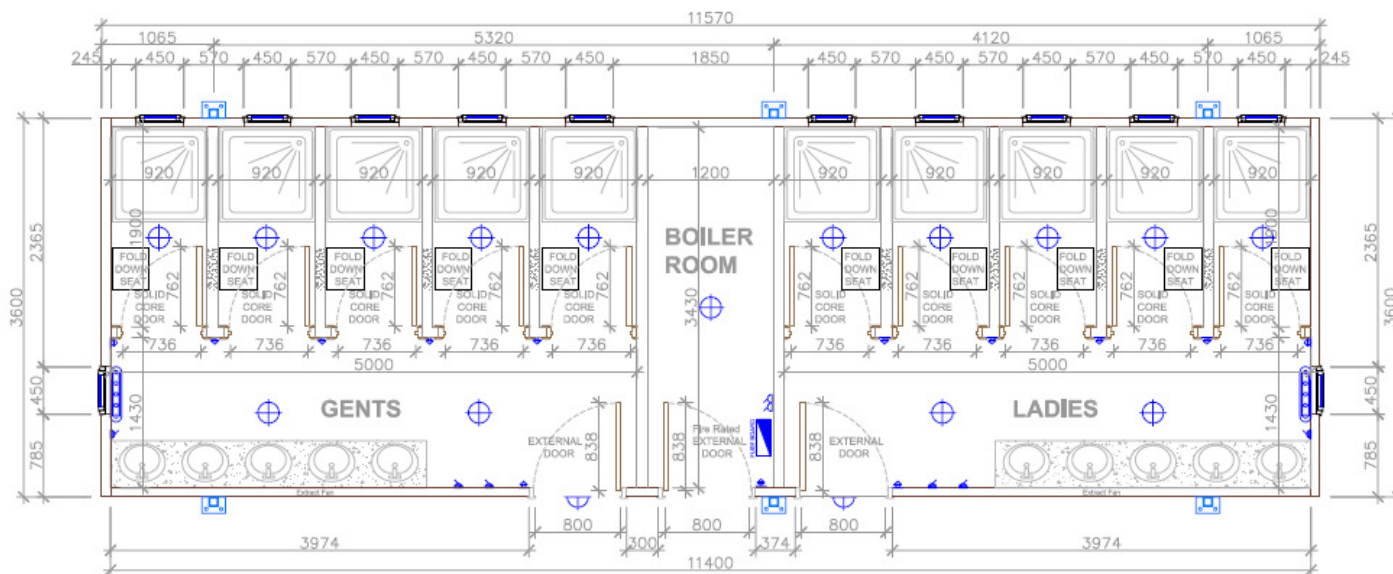


FOR APPROVAL

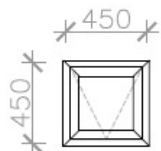
APPROVED BY: \_\_\_\_\_

DATE: \_\_\_\_\_

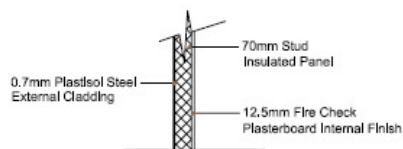


**FLOOR PLAN**  
SCALE 1:50

**WINDOW DETAIL**



**WALL CONSTRUCTION**



**ELECTRICAL LEGEND**

- 2D LIGHT FITTING
- ONE WAY SWITCH
- EXTERNAL EMERGENCY BULKHEAD
- TUBULAR HEATER
- ELCB FUSE BOARD
- FUSED SPUR
- 13A TWIN SOCKET (SWITCHED)
- EXTRACTOR FAN

**TIMBER FRAMED SPECIFICATION**

- Roof:**  
 175 x 38mm Timber Roof Joists,  
 18mm OSB,  
 Mylex Roof Blanket PVC Membrane  
**External Walls:** 53mm  
 0.7mm Plastic Coated Steel - Goosewing Grey  
 70mm Timber Frame  
 70mm High Density Polyethylene Insulation  
 12.5mm Vinyl Faced Fire Check Plasterboard White  
 (Food safe steel Internal Finish in showers)  
**Ceiling:**  
 12.5mm Vinyl Faced Plasterboard  
 200mm Floor to Ceiling Height  
**Floors:**  
 Aluminium Insulation Sheet  
 175 x 50mm Timber Joists  
 25mm Structural Plywood  
 Non-slip Vinyl Floor Covering - Blue  
**Internal Partitions - 100mm**  
 70x38mm Timber Studs  
 70mm Fibreglass Insulation  
 1No. Layer of 12.5mm Vinyl Faced Plasterboard Each Side  
 (Food safe steel finish to shower areas)  
**Windows:**  
 12 No. 450 x 450mm White PVC Double Glazed High Level Units  
**Doors:**  
 3 No. 838mm Steel Bonded External Doors  
 2 No. External Doors to be fitted with door closer & push button lock  
 10 No. 760mm Internal Solid Core Doors (fitted with indicator bolts)  
**Electrical:**  
 1 No. UK Fuse Board  
 15 No. 2D Lights  
 5 No. Vanity Lights with Pull Cords  
 5 No. Vanity Lights with Pull Cords & Shaver Sockets  
 2 No. External Bulk Head Lights with motion sensors  
 2 No. Tubular Heaters on own spurs  
 1 No. Double Socket  
 4 No. Fused Spurs (for hand & hair dryers)  
 1 No. 9" Extractor Fan with controller to Ladies Lobby  
 1 No. 9" Extractor Fan with controller to Gents Lobby  
**Mechanical:**  
 10 No. Time Delay Showers, Inc pump shower with chrome valves  
 (800x100mm tray, shower rail & curtain)  
 10 No. Wash Hand Basins with mixing valves (2x5 No. in Vanity units)  
**Boiler Room:**  
 1 No. C1 Fired Boiler with Megaflo Cylinder  
 1 No. C1 Burner with Flu  
 300Ltr Pressure Water Tank  
**Other Items:**  
 10 No. Fold Down Seats (in shower cubicles)  
 Grounds for Fold Down Seats.  
 20 No. Coat Hooks (2 No. to each shower door)  
**Jacklegs/Trims:**  
 6 No. 80mm x 80mm Steel Jacklegs Ocean Blue  
 Trims Ocean Blue

a.	Changed Spec, added Grounds : Amanda	08,12
No.	Revision	Date



CSL Unit 3, Freemantle Park Farm,  
Cottington Hill, Hanington RG26 5UD

Client

Project  
Timber Framed Unit

Drawing Title  
Floor Plan

Scale 1:50 @ A3	Drawing No.
Da	08-0813-01a
Draw	